

PRELIMINARY PLAT
NOT FOR RECORDATION
CONVEYANCES OR SALES

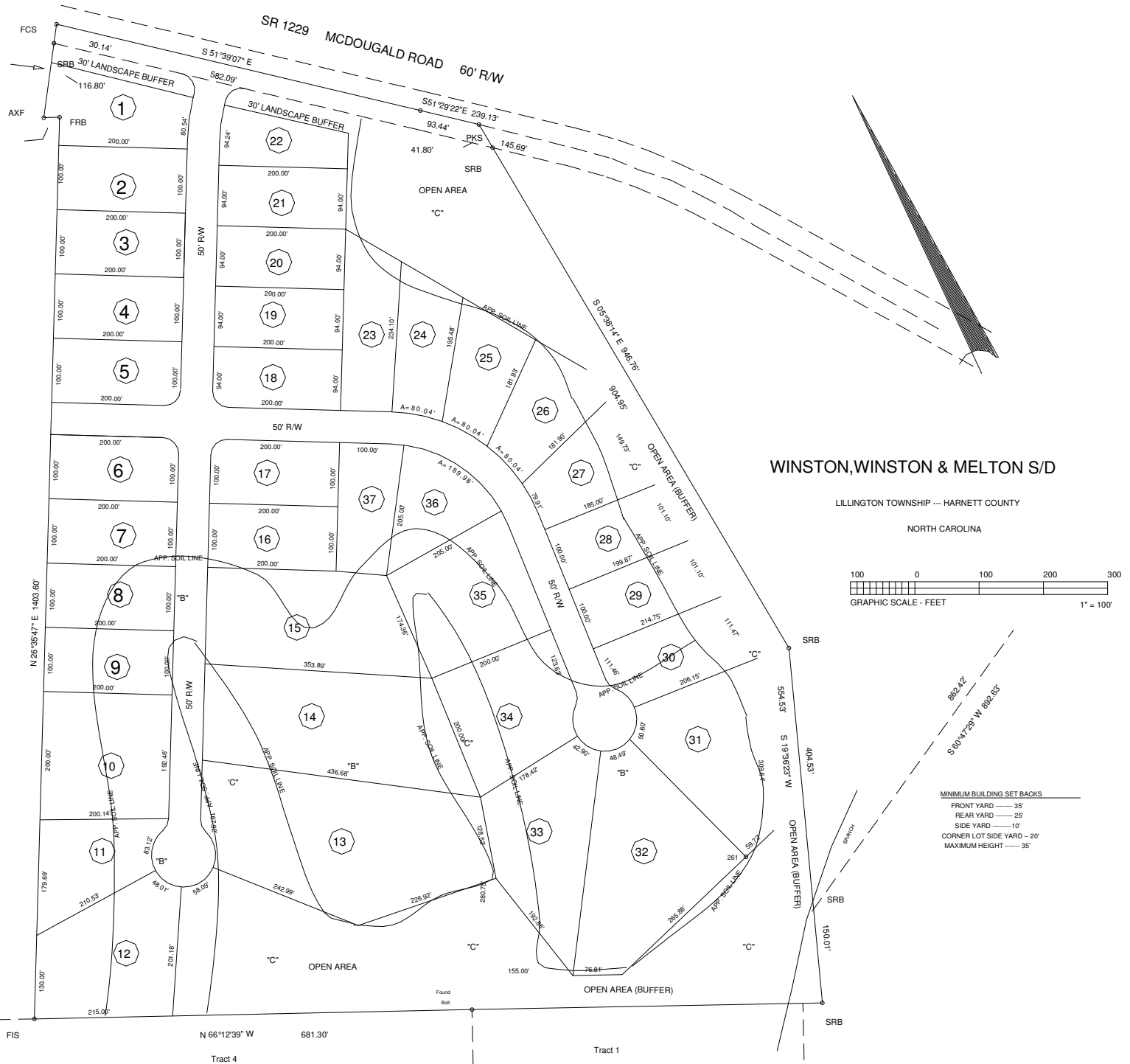
DANA B. MYRICK, et.al.
Deed Book 1735, Page 510

33.60 ACRES TOTAL
0.47 ACRES in R/W
33.13 ACRES NET
MIM. 6.63 AC. IN OPEN SPACE

APPROXIMATELY 37 LOTS
MIN. LOT SIZE 15,000 SQ.FT.
AVERAGE LOT SIZE 20,000 SQ.FT.

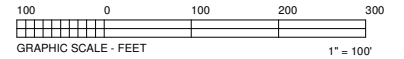
SOIL LINE APPROXIMATE AND COULD
EFFECT THE FINAL LOT COUNT.

LOTS WERE DESIGNED UNDER PROPOSED
HAENETT COUNTY SUBDIVISION ORDINANCE.



WINSTON, WINSTON & MELTON S/D

LILLINGTON TOWNSHIP -- HARNETT COUNTY
NORTH CAROLINA



MINIMUM BUILDING SET BACKS
FRONT YARD --- 30'
REAR YARD --- 25'
SIDE YARD --- 10'
CORNER LOT SIDE YARD --- 20'
MAXIMUM HEIGHT --- 35'